

# Landing craft

## D7.50



## Technical specifications

Overall length: 8.2m

Hull length: 7.5m

Overall width: 2.6m

Draft: 1.5 mm

Structure: Aluminum H111 5083

Payload capacity: 1 ton

Dual thermal or electric engine

Power: up to 2x100HP

Regulation: Division 222 or ES-TRIN

Category: 4th or 5th

Front landing hatch

Port-side door and davit (optional)

## A versatile and spacious vessel

With a significant deck space and its front hatch, the D7.50 allows for the transportation of goods or equipment from the coast or a dock. Its V-shaped hull ensures pleasant navigation at sea. This vessel, intended for professionals, can be powered by electric propulsion for low-speed port use or by thermal propulsion for higher speed requirements.

## The use

- Work vessel
- Freight transport
- Passenger transport

This range is customizable and adaptable to all needs. Contact us for a personalized quote.

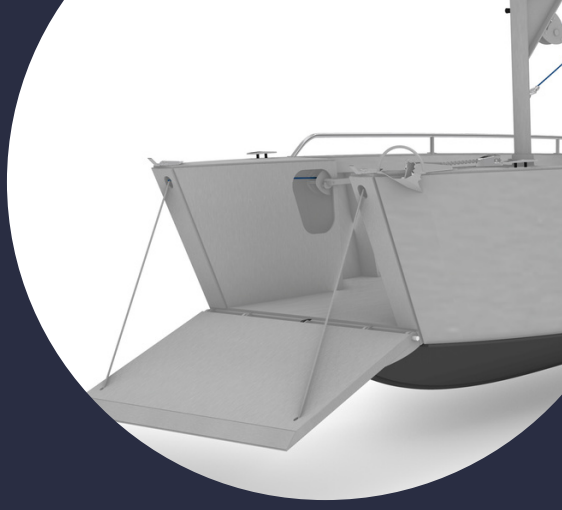


# Made in France

Our product is entirely manufactured in France. From design to construction, every step is carefully planned, designed, and executed locally.

## Landing hatch

Its landing hatch can be automated or simply tilted using a manual winch. It enables safe boarding of individuals, PRMs (Persons with Reduced Mobility), and goods.



## Lifting davit

The lifting davit has a Working Load Limit of 150kg. Its side boarding door allows easy access for embarking individuals on the quay and loads lifted by the davit.

